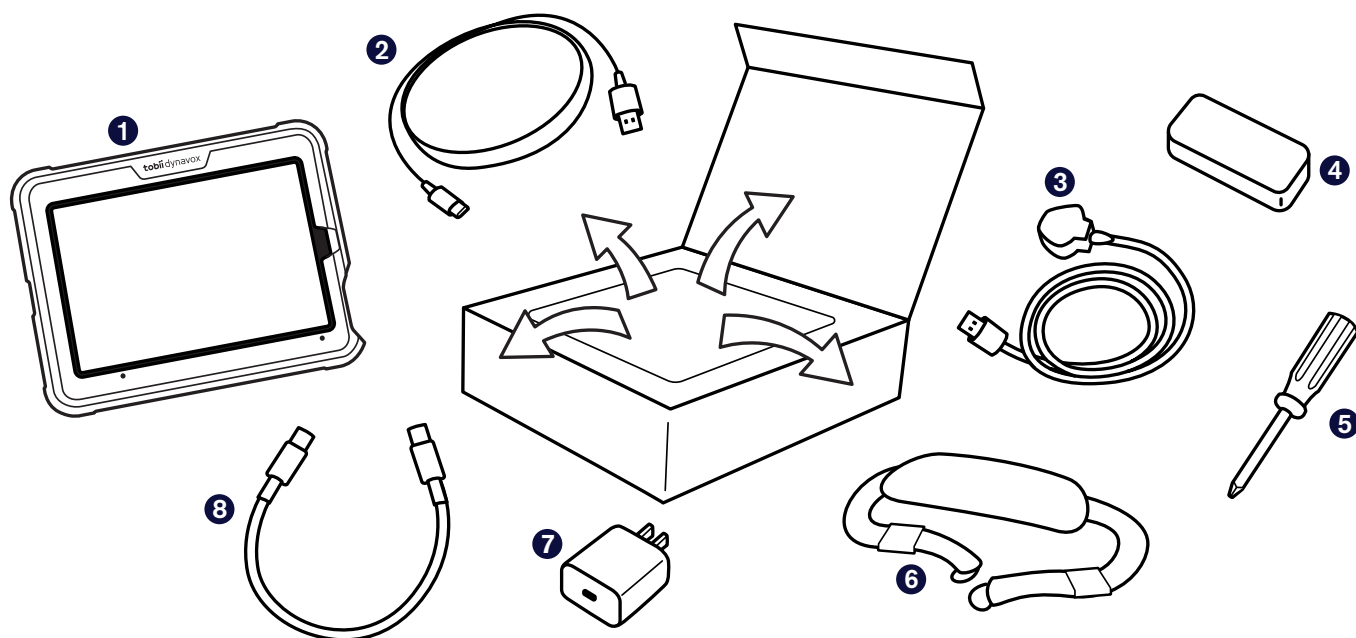


# Getting Started Guide

## SC Tablet Mini



## What's in the Box?



**1 Assembled SC Tablet**  
(TD Speech Case Mini and iPad Mini)

**2 USB-C to USB-A Cable**

**3 Speech Case Mini Power Cable**

**4 Speech Case Power Supply**  
(dual USB)

**5 Screwdriver**

**6 Shoulder Strap**

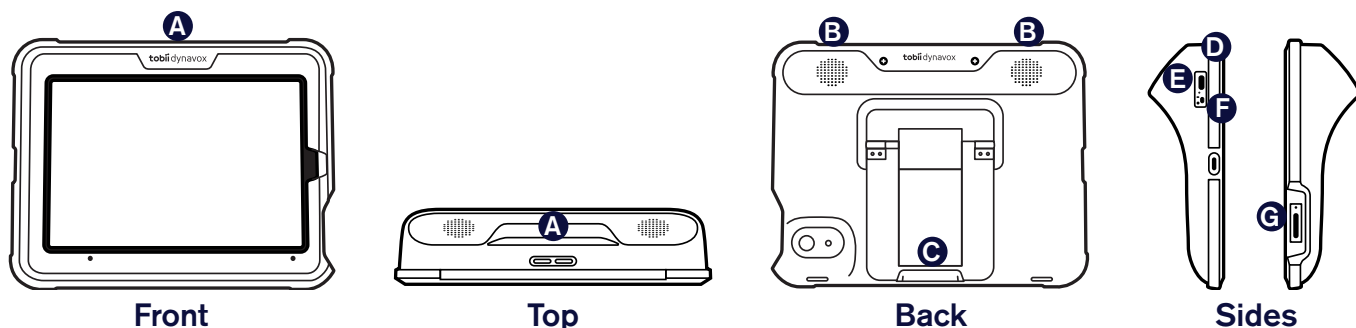
**7 USB-C iPad Power Adapter**

**8 USB-C iPad Power Cable**



*If you purchased any accessories, look for the separate installation instructions.*

## Getting to Know Your Device



**A Volume Rocker Switch**

**B Speakers**

**C Foldable Leg**

**D Charging Port**


**E Charging Indicator Light**  
(Power LED)

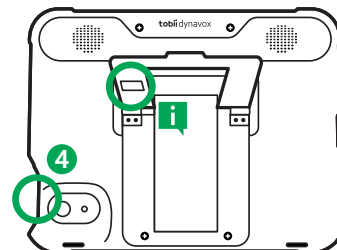
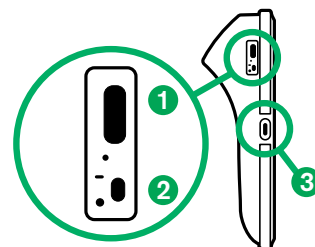
**F On/Off Selector**

**G iPad Mini Power Button**

## Step 1: Power On

- 1 Connect the power cable to the Speech Case Mini and then plug into an outlet.
- 2 Switch the Speech Case Mini power toggle to the ON position.
- 3 Connect the USB-C iPad power cable to the iPad and power adapter, then plug the power adapter into an outlet.
- 4 Press the Power button on the iPad to turn it on.

 If using multiple Speech Cases in one room, you can identify each Speech Case by the last five digits of the Bluetooth ID. It will match the unique five-digit serial number located under the foldable leg on the Speech Case.





## Step 2: Bluetooth Pairing

- 1 On the iPad, go to **Settings > Bluetooth**.
- 2 Make sure that Bluetooth is turned ON.
- 3 Select SCmini.

## Step 3: Choose a Communication App

Use the table below to identify the communication app that best suits the user.

Both TD Snap and TD Talk are pre-installed on your SC Tablet Mini, so just tap your preferred app icon to start communicating!

	 <b>TD Snap</b>	 <b>TD Talk</b>
<b>Description</b>	TD Snap is a speech generating app for those who are not literate and/or need symbol support (including people with Aphasia).	TD Talk is a speech generating app for people who are literate and do not need supporting symbols.
<b>Composing messages</b>	Messages are composed using word and phrase buttons with supporting symbols. An on-screen keyboard is also available.	Messages are composed using an on-screen keyboard with word and phrase prediction, similar to SMS texting.
<b>Literacy level</b>	All - emergent through advanced	Advanced
<b>Ages</b>	All ages	Teen to adult
<b>Aphasia supports</b>	Yes	No

## Step 4: Learn, Practice, and Troubleshoot

Your SC Tablet Mini is now ready to use! Feel free to start exploring your device and apps. When you are ready to learn more, check out the TD Snap and TD Talk Training Cards. The training cards teach you how to use the main features of your communication software, grow your AAC communication skills, and troubleshoot issues.



### Important

Many funding sources require speech generating devices to be sold as dedicated (closed) devices. Closed devices have limited internet and app store access. Once a speech generating device is delivered to the user or their representative, they are permitted to open the device for an additional fee, giving them full access to the internet and the app store. If you would like to learn more about opening a closed device, call **1-800-344-1778**.



### TD Snap Core First Training Cards

[grco.de/bbWKbL](https://grco.de/bbWKbL)



### TD Snap Aphasia Training Cards

[grco.de/AphasiaCards](https://grco.de/AphasiaCards)



### TD Talk Training Cards

[grco.de/bcya3k](https://grco.de/bcya3k)

## Additional Resources

Scan the QR codes or use the links.



### SC Tablet Mini User's Manual

[grco.de/bd5yfd](https://grco.de/bd5yfd)



### Tobii Dynavox Learning Hub

[learn.tobiidynavox.com](https://learn.tobiidynavox.com)



### TD Speech Case Support Page

[grco.de/bczj7y](https://grco.de/bczj7y)



### myTobiiDynavox

[mytobiidynavox.com](https://mytobiidynavox.com)



### TD Facebook Community

[grco.de/TDFB](https://grco.de/TDFB)



### North America Technical Support

1-800-344-1778 ext. 1